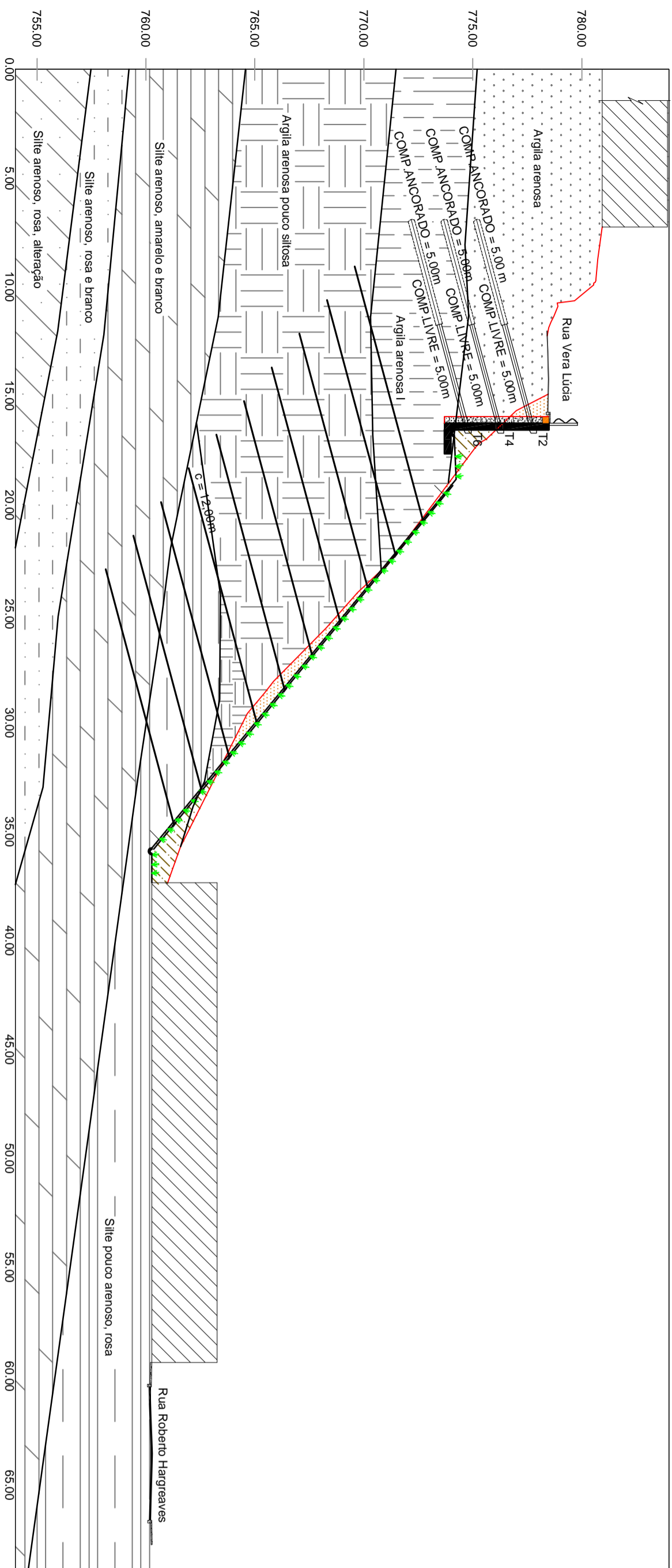
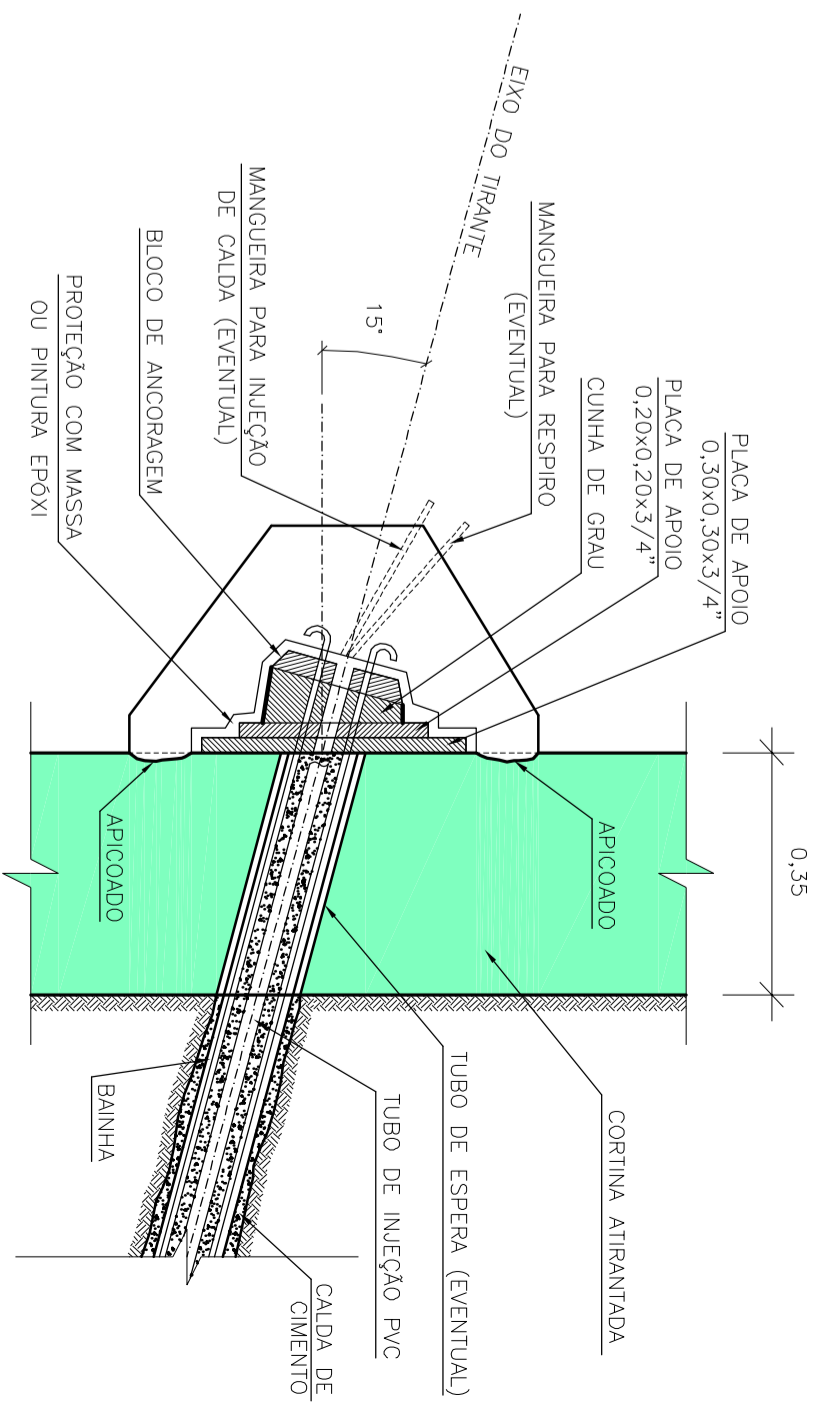
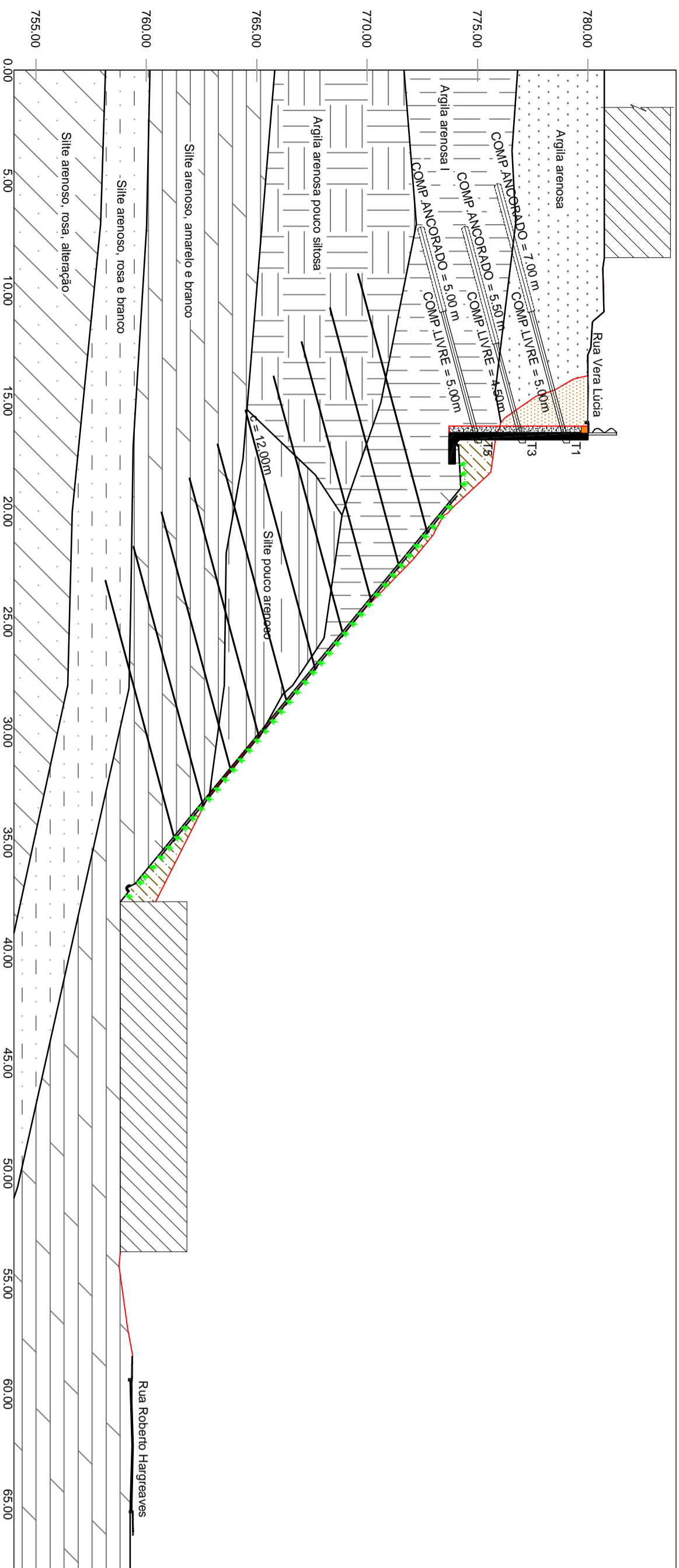


ESTATIGRAFIA DO SOLO - ANCORAGEM DOS TIRANTES - CORTINA 4,50m



ESTATIGRAFIA DO SOLO - ANCORAGEM DOS TIRANTES - CORTINA 6,00m










### DETALHE DA CABEÇA DO TIRANTE

S/ ESCALA

CORTINA ATRIRANTADA - TIRANTES						
TIRANTE Nº	TIPO CORDOALHA	CARGA DE TRABALHO (C.I.)	CARGA DE INCORPORAÇÃO (C.I.)	TRECHO LIVRE (m)	TRECHO ANCORADO (m)	TOTAL (m)
T1.Aa T1.F	3 Ø 1/2"	25,0tf	20,0tf	5,0	7,0	72,0
T2.Aa T2.D	3 Ø 1/2"	20,0tf	16,0tf	5,0	5,0	40,0
T3.Aa T3.F	4 Ø 1/2"	30,0tf	24,0tf	4,5	5,5	60,0
T4.Aa T4.D	4 Ø 1/2"	30,0tf	24,0tf	5,0	5,0	40,0
T5.Aa T5.F	5 Ø 1/2"	35,0tf	28,0tf	5,0	5,0	60,0
T6.Aa T6.D	5 Ø 1/2"	35,0tf	28,0tf	5,0	5,0	40,0
TOTAL						312,00

## NOTAS

As normas técnicas referentes a esse projeto estão listadas na Especificação Técnica. Para fontes de consulta para composição de preços e serviços, vide plancha 08/10

LEGENDA	
	Argila arenosa
	Argila arenosa, l
	Argila arenosa, pouco silteosa
	Silte pouco arenoso
	Silte arenoso, amarelado e branco
	Silte arenoso, rosa e branco
	Silte arenoso, rosa

PREFEITURA DE JUIZ DE FORA  
PLANO MUNICIPAL DE REDUÇÃO DE RISCOS A ESCORREGAMENTOS - PMRRE



LOCAL: BAIRRO LINHARES - SETOR E22 - SUBSETOR E22-1

**TÍTULO DO PROJ.:** ESTUDOS PRELIMINARES E PROJETOS BÁSICOS PARA O PMRE  
PROCESSO Nº 2598.0351.492-6/3/2011-MINISTÉRIO DAS CIDADES/CAIXA

ENG. RESP.: ALEXANDRE ZUPPOLINI NETO

PROJ: PROJETO BÁSICO  
DESTALHES CONSTRUTIVOS II

CREA N° 14140

ART N° 1077886

**LENC<sup>®</sup>**

DATA: 02/10/2014

ESCA

FOLHA: 6/10